

NOVITÀ 2021/22



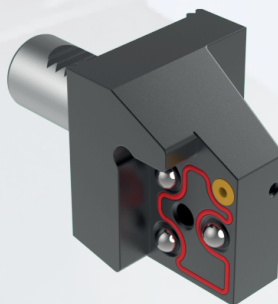
BASI ModulTURN System



MAZAK 40 e 50

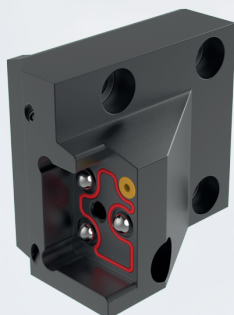
MTS-MZK40-B1C-A
MTS-MZK40-B3C-B

MTS-MZK50-B1C-A
MTS-MZK50-B3C-B



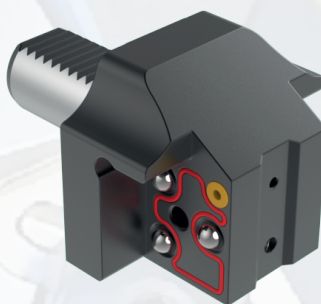
VDI 25W (INDEX TRAUB)

MTS-VDI25W-B1B4C-A
MTS-VDI25W-B2B3C-B



NAKAMURA 55 (CMZ)

MTS-NKM55-B1B4C-A
MTS-NKM55-B2B3C-B



VDI DOPPIO

MTS-VDI30-D1C
MTS-VDI30-D2C

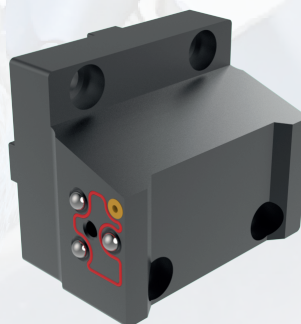
MTS-VDI40-D1C
MTS-VDI40-D2C

MTS-VDI50-D1C
MTS-VDI50-D2C



CMZ 30 (DMG-MORI)

MTS-CMZ30-B1B4C-A
MTS-CMZ30-B2B3C-B



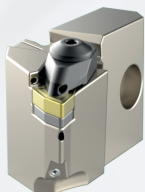
DOOSAN DOPPIO

MTS-BMT65-D1D2C

NOVITÀ 2021/22



Cartucce Tornitura - Troncatura - Distanziale



Inserto WN..06

MTS-DWLNL-06-A
MTS-DWLN-06-B



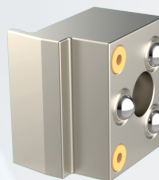
Inserto CC..09

MTS-SCLCL-09-A
MTS-SCLCR-09-B



Troncatura (Mitsubishi) Inserto 3 / 4

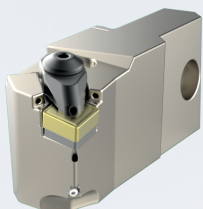
MCGL/R ... -A/B



Distanziale per MTS

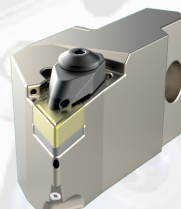
MTS-DSC25

Cartucce Tornitura **LUNGHE** per Contropunta



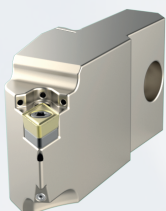
Inserto CN..12

MTS-DCLNL-12-AL
MTS-DCLNR-12-BL



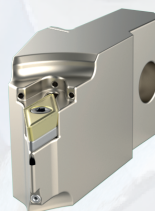
Inserto DN..15

MTS-DDJNL-15-AL
MTS-DDJNR-15-BL



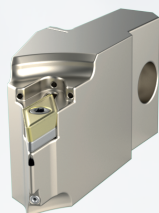
Inserto DC..11

MTS-SDJCL-11-AL
MTS-SDJCR-11-BL



Inserto VC..16

MTS-SVJCL-16-AL
MTS-SVJCR-16-BL



Inserto VB..16

MTS-SVJBL-16-AL
MTS-SVJBR-16-BL



Inserto ER..16 / IR..16

MTS-DEL-16-AL
MTS-DER-16-BL