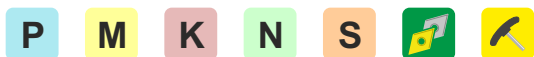
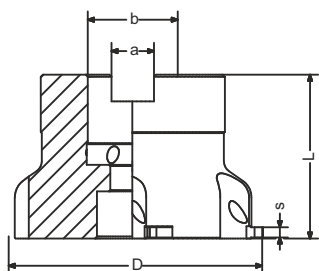
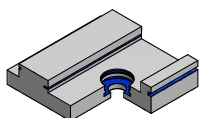


## Frese per canalini per inserto SG16..

[illegible]

MATERIALI - MATERIALS		HB	fz (mm)	ap (mm)	Velocità di Taglio – Cutting Speed – Vc m/min					
						PG4135				
P	ACCIAIO NON LEGATO - NOT ALLOY STEEL	120-300	0,2	1-3		80-140				
	ACCIAIO LEGATO - ALLOY STEEL	180-350	0,15	1-3		60-120				
	ACCIAIO ALTO LEGATO - HIGH ALLOY STEEL	300-330	0,15	1-3		60-90				
M	INOX AUSTENITICO - DUPLEX - STAINLESS STEEL	180-230	0,1	1-3		40-120				
K	GHISA GRIGIA - GREY CAST IRON	120-260	0,25	1-3		90-180				
	GHISA SFEROIDALE - SPHEROIDAL CAST IRON	160-250	0,2	1-3		100-160				
	GHISA MALLEABILE - MALLEABLE CAST IRON	130-230	0,2	1-3		100-200				
N	ALLUMINIO E SUE LEGHE - ALUMINIUM	60-130	0,2	1-3						
	RAME E SUE LEGHE - COPPER	90-110	0,15	1-3						
	NON METALLICI - PLASTICS		0,15	1-3						
S	LEGHE RESIST. AL CALORE - HIGH TEMP. ALLOY	200-320	0,1	1-3						
	TITANIO E SUE LEGHE - TITANIUM	400-1050	0,1	1-3						

### Tipo di lavorazione - Recommended machining types



C x 6



L2 - L7

