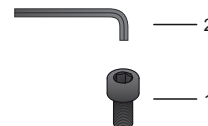
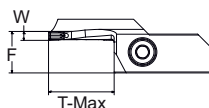
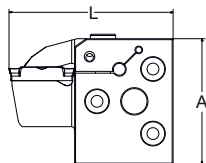


# CCFR...30-A

Cartucce per scanalatura frontale con inserto 3 mm / Cartridges for face grooving with 3 mm insert



Codice Articolo Item Code	D min	D max	T-max	L	A	F	W	Inserto Insert	Peso Weight	Prezzo Price
<b>Profondità di taglio 10 mm / Depth of cut 10 mm</b>										
<b>CCFR 2230 30 10-A</b>	22	36	10	45	42	14	3,0	CTSN 22-30	0,13 kg	€ 104,00
<b>CCFR 3038 30 10-A</b>	30	44	10	45	42	14	3,0	CTSN 22-30	0,13 kg	€ 104,00
<b>CCFR 3848 30 10-A</b>	38	54	10	45	42	14	3,0	CTSN 22-30	0,13 kg	€ 104,00
<b>CCFR 4860 30 10-A</b>	48	66	10	45	42	14	3,0	CTSN 22-30	0,13 kg	€ 104,00
<b>CCFR 6075 30 10-A</b>	60	81	10	45	42	14	3,0	CTSN 22-30	0,13 kg	€ 104,00
<b>CCFR 75100 30 10-A</b>	75	106	10	45	42	14	3,0	CTSN 22-30	0,13 kg	€ 104,00
<b>CCFR 100200 30 10-A</b>	100	206	10	45	42	14	3,0	CTSN 22-30	0,13 kg	€ 104,00
<b>CCFR 200-&gt; 30 10-A</b>	200	>206	10	45	42	14	3,0	CTSN 22-30	0,13 kg	€ 104,00
<b>Profondità di taglio 20 mm / Depth of cut 20 mm</b>										
<b>CCFR 6075 30 20-A</b>	60	81	20	55	42	14	3,0	CTSN 22-30	0,14 kg	€ 109,00
<b>CCFR 75100 30 20-A</b>	75	106	20	55	42	14	3,0	CTSN 22-30	0,14 kg	€ 109,00
<b>CCFR 100200 30 20-A</b>	100	206	20	55	42	14	3,0	CTSN 22-30	0,14 kg	€ 109,00
<b>CCFR 200-&gt; 30 20-A</b>	200	>206	20	55	42	14	3,0	CTSN 22-30	0,14 kg	€ 109,00

Base / Basements



MTS-...-C2C3C-A | p. 28

Parti di Ricambio / Spare Parts



1



2

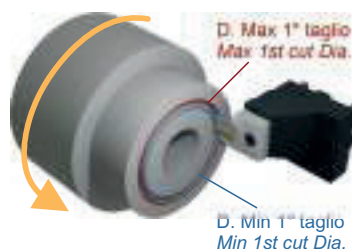
VB0518

€ 4,00

CBR40

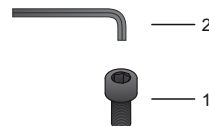
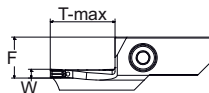
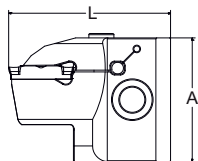
€ 4,00

Direzione rotazione Antioraria  
Counter clock wise rotation



# CCFL...30-B

Cartucce per scanalatura frontale con inserto 3 mm / Cartridges for face grooving with 3 mm insert



Codice Articolo Item Code	D min	D max	T-max	L	A	F	W	Inserto Insert	Peso Weight	Prezzo Price
<b>Profondità di taglio 10 mm / Depth of cut 10 mm</b>										
<b>CCFL 2230 30 10-B</b>	22	36	10	45	42	14	3,0	CTSN 22-30	0,13 kg	€ 104,00
<b>CCFL 3038 30 10-B</b>	30	44	10	45	42	14	3,0	CTSN 22-30	0,13 kg	€ 104,00
<b>CCFL 3848 30 10-B</b>	38	54	10	45	42	14	3,0	CTSN 22-30	0,13 kg	€ 104,00
<b>CCFL 4860 30 10-B</b>	48	66	10	45	42	14	3,0	CTSN 22-30	0,13 kg	€ 104,00
<b>CCFL 6075 30 10-B</b>	60	81	10	45	42	14	3,0	CTSN 22-30	0,13 kg	€ 104,00
<b>CCFL 75100 30 10-B</b>	75	106	10	45	42	14	3,0	CTSN 22-30	0,13 kg	€ 104,00
<b>CCFL 100200 30 10-B</b>	100	206	10	45	42	14	3,0	CTSN 22-30	0,13 kg	€ 104,00
<b>CCFL 200-&gt; 30 10-B</b>	200	>206	10	45	42	14	3,0	CTSN 22-30	0,13 kg	€ 104,00
<b>Profondità di taglio 20 mm / Depth of cut 20 mm</b>										
<b>CCFL 6075 30 20-B</b>	60	81	20	55	42	14	3,0	CTSN 22-30	0,14 kg	€ 109,00
<b>CCFL 75100 30 20-B</b>	75	106	20	55	42	14	3,0	CTSN 22-30	0,14 kg	€ 109,00
<b>CCFL 100200 30 20-B</b>	100	206	20	55	42	14	3,0	CTSN 22-30	0,14 kg	€ 109,00
<b>CCFL 200-&gt; 30 20-B</b>	200	>206	20	55	42	14	3,0	CTSN 22-30	0,14 kg	€ 109,00

Base / Basements



MTS-...-C1C4C-B | p. 28

Parti di Ricambio / Spare Parts



VB0518  
€ 4,00



CBR40  
€ 4,00

Direzione rotazione Oraria  
Clock wise rotation

