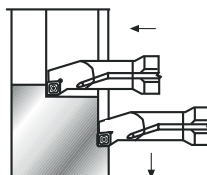
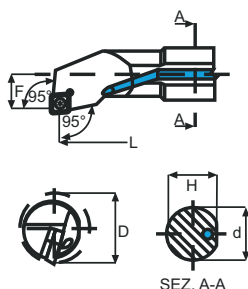
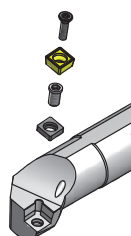


## Utensili per tornitura interna

[illegible]

MATERIALI - MATERIALS		HB	fz (mm)	ap (mm)	Velocità di Taglio – Cutting Speed – Vc m/min						
					CT9325			PT8130	WT1010		
P	ACCIAIO NON LEGATO - NOT ALLOY STEEL	120-300	0,2	1–3	200			180			
	ACCIAIO LEGATO - ALLOY STEEL	180-350	0,15	1–3	150			140			
	ACCIAIO ALTO LEGATO - HIGH ALLOY STEEL	300-330	0,15	1–3	120			100			
M	INOX AUSTENITICO - DUPLEX - STAINLESS STEEL	180-230	0,1	1–3			120				
K	GHISA GRIGIA - GREY CAST IRON	120-260	0,25	1–3							
	GHISA SFEROIDALE - SPHEROIDAL CAST IRON	160-250	0,2	1–3							
	GHISA MALLEABILE - MALLEABLE CAST IRON	130-230	0,2	1–3							
N	ALLUMINIO E SUE LEGHE - ALLUMINIUM	60-130	0,2	1–3				1500			
	RAME E SUE LEGHE - COPPER	90-110	0,15	1–3				400			
	NON METALLICI - PLASTICS		0,15	1–3				200			
S	LEGHE RESIST. AL CALORE - HIGH TEMP. ALLOY	200-320	0,1	1–2							
	TITANIO E SUE LEGHE - TITANIUM	400-1050	0,1	1–2							



B x 5



L2-L7

